



INTERNATIONAL EXCHANGE

for GCM Students 🇪🇺 🇧🇪 🇩🇰 🇩🇪 🇰🇷 🇸🇪 🇬🇧

WHY GO ON EXCHANGE?

In our increasingly globalized world, integrating an overseas study component is an invaluable educational experience for post-secondary students.

Here are some of the benefits students have provided as feedback:

- * Higher satisfaction with undergraduate experience
- * Developed greater resilience and adaptability
- * Cultural awareness
- * Higher employment rates following graduation



More information about The Creative School exchange program can be found at torontomu.ca/the-creative-school/international/exchanges/outbound/.

MORE REASONS TO GO ON EXCHANGE

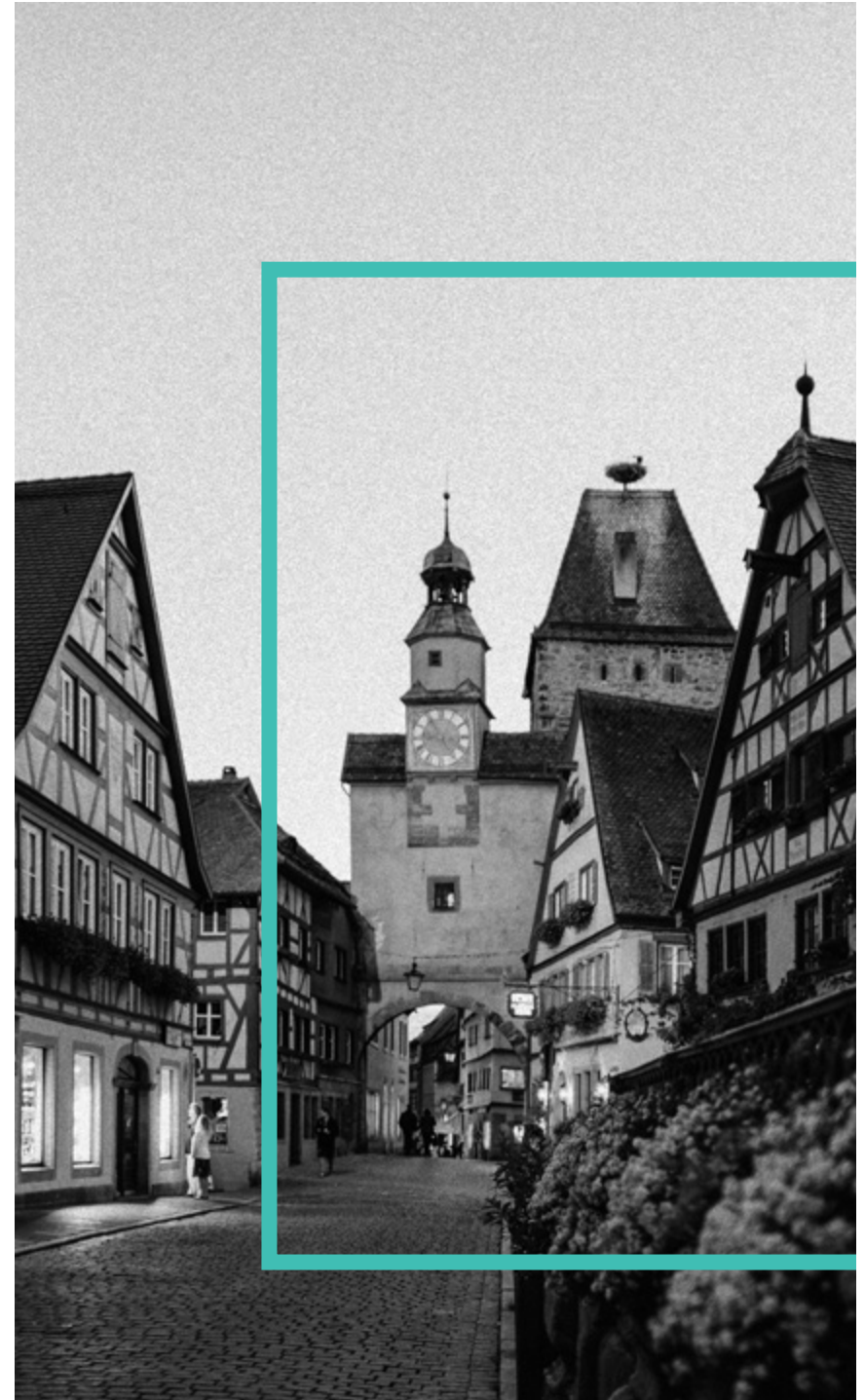
- * Learn about a different country
- * Learn about a different culture
- * Get to know people from different countries
- * Become more independent
- * Learn more about yourself
- * Make new friends
- * Experience a different point of view
- * See Europe, Asia and Australia/Oceania

WHAT TO DO BEFORE GOING ON EXCHANGE?

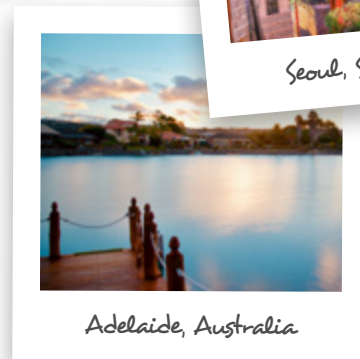
- * Have a valid passport
- * Get a student visa (*for the country you will be staying in*)
- * Save money (*for all those trips within Europe, Asia and now Australia*)

IMPACT ON INTERNSHIP

If you participate in Winter term outbound exchange, your exchange experience will count towards your internship requirements. You will not need to complete your 300 paid internship hours and you will be granted credit for WKT608 GCM Internship (*4th Year required course*).



OUR EXCHANGE PARTNERS



Scan the QR codes or click on the school name.

1. ADELAIDE, AUSTRALIA 🇦🇺



University of South Australia

2. GHENT, BELGIUM 🇧🇪



Artevelde Hogeschool

3. COPENHAGEN, DENMARK 🇩🇰



Danish School of Media and Journalism

7. LINKÖPING, SWEDEN 🇸🇪



Linköping University

4. STUTTART, GERMANY 🇩🇪



Hochschule der Medien (HdM),
Stuttgart Media University

5. SEOUL, SOUTH KOREA 🇰🇷



Dongguk University

6. SEOUL, SOUTH KOREA 🇰🇷



Sunkyunkwan University

8. LONDON, UNITED KINGDOM 🇬🇧



University of Westminster

Adelaide, Australia

COST COMPARISON



	TORONTO, CANADA	ADELAIDE, AUSTRALIA	GHENT, BELGIUM	COPENHAGEN, DENMARK	STUTTART, GERMANY	SEOUL, SOUTH KOREA	LONDON, UNITED KINGDOM
<i>Monthly Rent</i>	\$2,600	\$1,947	\$1,280	\$2,450	\$568	\$1,258	\$2,900
<i>Food, clothing, cell phone, culture/tourism</i>	\$1,000	\$950	\$800	\$700	\$700	\$1,100	\$825
<i>Public Transit</i>	\$128	\$105	\$75	\$140	\$90	\$63	\$119
<i>Total per month</i>	\$3,728	\$3,002	\$2,155	\$3,290	\$1,358	\$2,421	\$3,844
<i>Cost for 4 months</i>	\$14,912	\$12,008	\$8,620	\$13,160	\$5,432	\$9,684	\$15,376
<i>TMU Tuition</i>	\$3,953	\$3,953	\$3,953	\$3,953	\$3,953	\$3,953	\$3,953
<i>Miscellaneous Costs</i>	\$1,300	\$1,300	\$1,300	\$1,300	\$1,300	\$1,300	\$1,300
TOTAL COST FOR ONE SEMESTER (4 MONTHS)	\$20,165	\$17,261	\$13,873	\$18,413	\$10,685	\$14,937	\$20,629

One-time Fees

<i>Health Insurance (estimated)</i>	–	\$188	\$150	\$150	\$1,156	\$405	\$420
<i>Course Union Fees</i>	–	–	–	–	\$282	–	–
<i>International Exchange Student Fees</i>	–	–	–	–	–	\$53 (Dongguk only)	–
<i>Visa</i>	–	\$3,207	\$461	\$500	\$136	\$78	\$876
<i>Plane Ticket</i>	–	\$4,150	\$1,750	\$1,600	\$1,710	\$2,570	\$1,540

Estimated costs in CAD. Exchange rate calculations were done October 2024.

AVAILABLE FINANCIAL HELP

Baden-Württemberg Scholarship (min. 3,000€)

The Baden-Württemberg-Scholarship will be awarded in conjunction with the International Office at the Hochschule der Medien (HdM) through a nomination process. The minimum amount is Euro 600/month to a maximum of Euro 1400/month. HdM will nominate a TMU student for this award.

Toronto Met International Exchange Opportunities Scholarship (TMIEOS) (\$2,000)

You need to apply a year in advance to this scholarship. Details can be found at: torontomu.ca/global-learning/finance-participation/.

ELIGIBILITY

These awards are restricted to full-time Creative School students who have maintained clear academic standing (minimum CGPA of 2.5) and who will be participating in an approved international exchange program.



ACADEMIC REQUIREMENTS

Take a full course load at your exchange school (4-6 courses, depending on the credits offered for a course). When you return to TMU, you will receive transfer credits for successfully completed exchange courses; this will amount to a TMU full course load (5 TMU transfer credits).

For European Exchange Universities

You need to take courses that amount to 30 European Transfer Credit System (ECTS) credits

For Sung Kyun Kwan University

You need to take courses that amount to 18 credits
(skku.edu/eng/International/StudySKKU/CourseInformation.do)

For Dongguk University

You need to take courses that amount to 18 credits
(dongguk.edu/eng/page/478)

For University of South Australia

You need to take courses that amount to 18 credits
(unisa.edu.au/)



